

Circular Plastics Australia (PE) Recycled Resins Range



CREATED BY

PACT
GROUP

CLEANAWAY

CIRCULAR PLASTICS AUSTRALIA (PE) IS A JOINT VENTURE BETWEEN PACT GROUP AND CLEANAWAY. OUR STATE-OF-THE-ART RECYCLING FACILITY IN LAVERTON (VIC) HAS THE CAPACITY TO PRODUCE MORE THAN 20,000 TONNES OF HIGH QUALITY FOOD-GRADE AND NON FOOD-GRADE RECYCLED HDPE AND RECYCLED PP PER ANNUM.

A Local Circular Solution

Our range of locally processed and recycled resins are derived from Australian kerbside collected post-consumer (PCR) recycled plastic.



Consumers recycle and Cleanaway collects and sorts.



Circular Plastics Australia (PE) process and pelletise into food-grade and non food-grade recycled plastic resin.



Pact Group remake the recycled resin into new packaging for its food, beverage and personal care customers.



Australasian consumers can choose packaging that contains locally recycled plastic.

Why is locally processed and recycled resin important?



Quality - Circular Plastics Australia (PE) recycled resins are manufactured to local and global codes and regulations that are rigorous. Unregulated imported recycled resins can have questionable providence.



Eliminates carbon emissions created by importing resin via ocean freight.



Total transparency of supply chain from kerbside to containers.



Creates a local circular economy that takes responsibility for Australasia's plastic waste to landfill.



Continuity of supply, reliability and speed-to-market.

Our Range of Recycled High-Density Polyethylene (rHDPE) and Polypropylene (rPP) Resins

Circular Plastics Australia (PE) produce a range of recycled high-density polyethylene (rHDPE) and recycled polypropylene (rPP) resins, including both food-grade and non-food-grade options, suitable for various applications.

These resins are produced from Australian post-consumer recycle (PCR) obtained from municipal household kerbside collections. Our recycling process ensures that the recycled resins meet quality standards are suitable for their intended uses, including for food packaging.



Food-Grade rHDPE



rFresh100
Food rHDPE resin

Non Food-Grade rHDPE



rEdge200
Natural rHDPE resin



rPure300
Colour rHDPE resin

Non Food-Grade rPP



rClean400
Colour rPP resin



rClean410
Black rPP resin

Circular Plastics Australia's Food-Grade rHDPE

Circular Plastics Australia (PE)'s Food-Grade rHDPE, rFresh-100 combines food-grade safety, hygiene, and lightweight versatility. Our odourless rFresh-100 is US FDA compliant and suitable for food contact applications. This means packaging can be made with up to 100% rFresh-100 resin.

From white and flavoured milk, cream, juice and sauce bottles to nutraceutical and personal care containers – rFresh-100 suits all Food-Grade rHDPE applications.

The Food-Grade rHDPE process:

THE FOOD-GRADE HIGH DENSITY POLYETHYLENE (HDPE) RECYCLING PROCESS



Product Data

rFresh-100: Recycled HDPE Resin (Food-Grade)

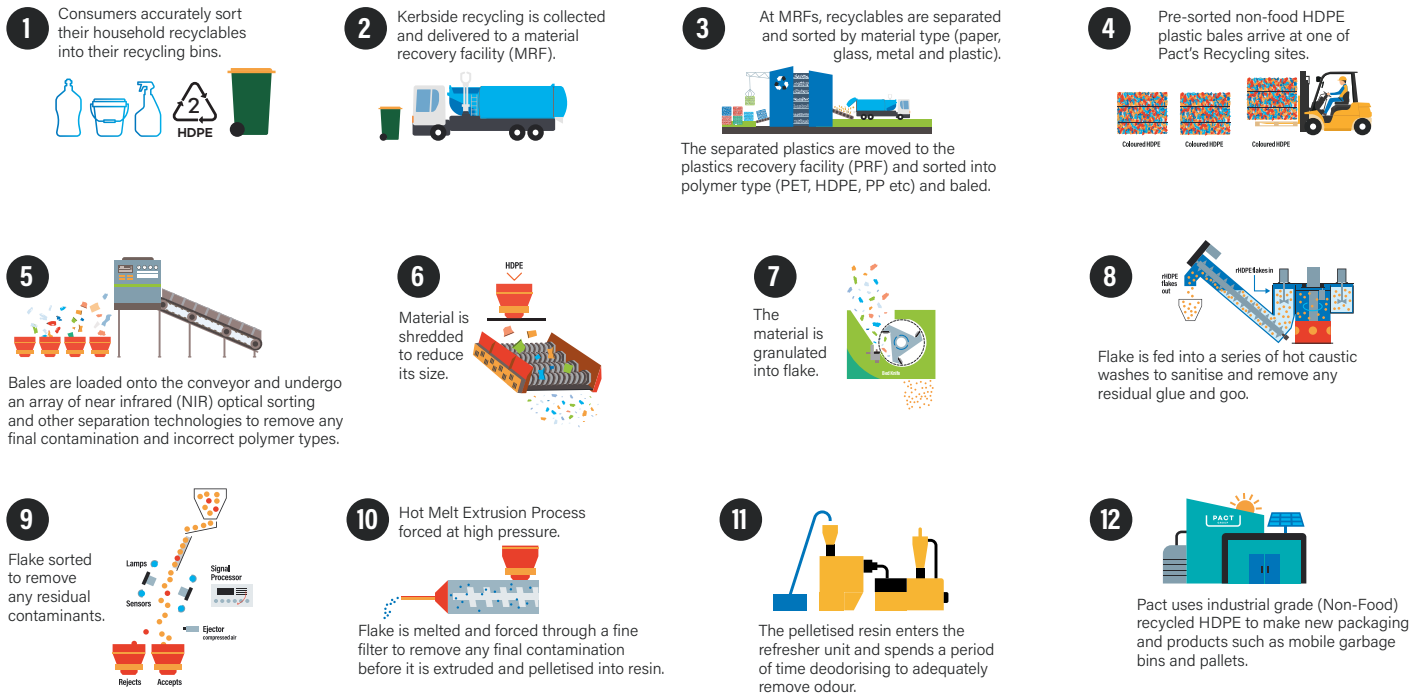
Product Code and Name:	Polymer rHDPE rFresh-100	3215380
Chemical description:	Recycled High Density Polyethylene (rHDPE).	
Origin:	HDPE dairy and beverage bottles and containers (including their closures) sourced in Australia mainly from kerbside collections.	
Form:	Pellet, spheroid shaped.	
Colour:	Natural (translucent white)	
Application:	Single use food contact food and beverage packaging and non-food contact packaging. May be utilised at up to 100% for applications intended for food contact.	
Major End Use:	Extrusion, Blow Moulding, Compounding and Sheet extrusion. This product is not recommended for applications where Environmental Stress Crack Resistance (ESCR) is required.	
Food Contact Recycling Process:	Erema INTAREMA® TVE plus® and Refresher covered by USFDA PNC 2551 and LNO237. This product meets the requirements of US FDA 21 CFR 177.1520 (c) 2.1 when used in accordance with the US FDA application guidelines and is suitable for packaging "All Food Types" (US FDA Table 1) for Conditions of Use E through to G (US FDA Table 2). For food-contact applications, the user must ensure final compliance of the article/s with the requirements of the appropriate US FDA regulations and local regulations that may apply.	

Circular Plastics Australia's Non Food-Grade rHDPE

Circular Plastics Australia (PE) has two specifications of Non Food-Grade rHDPE, rEdge-200 and rPure-300. rEdge-200 is our natural, odourless recycled resin that suits the following application; personal care, laundry, homecare and various extrusion and blow moulding packaging applications. Our coloured rPure-300 rHDPE is suitable for industrial applications including pipe extrusion and mobile garbage bins (MGB).

The Non Food-Grade rHDPE process:

THE NON-FOOD HIGH DENSITY POLYETHYLENE (HDPE) RECYCLING PROCESS



Product Data

rEdge-200: Recycled HDPE Resin (Non Food-Grade)



Product Data

rPure-300: Recycled HDPE Resin (Non Food-Grade)

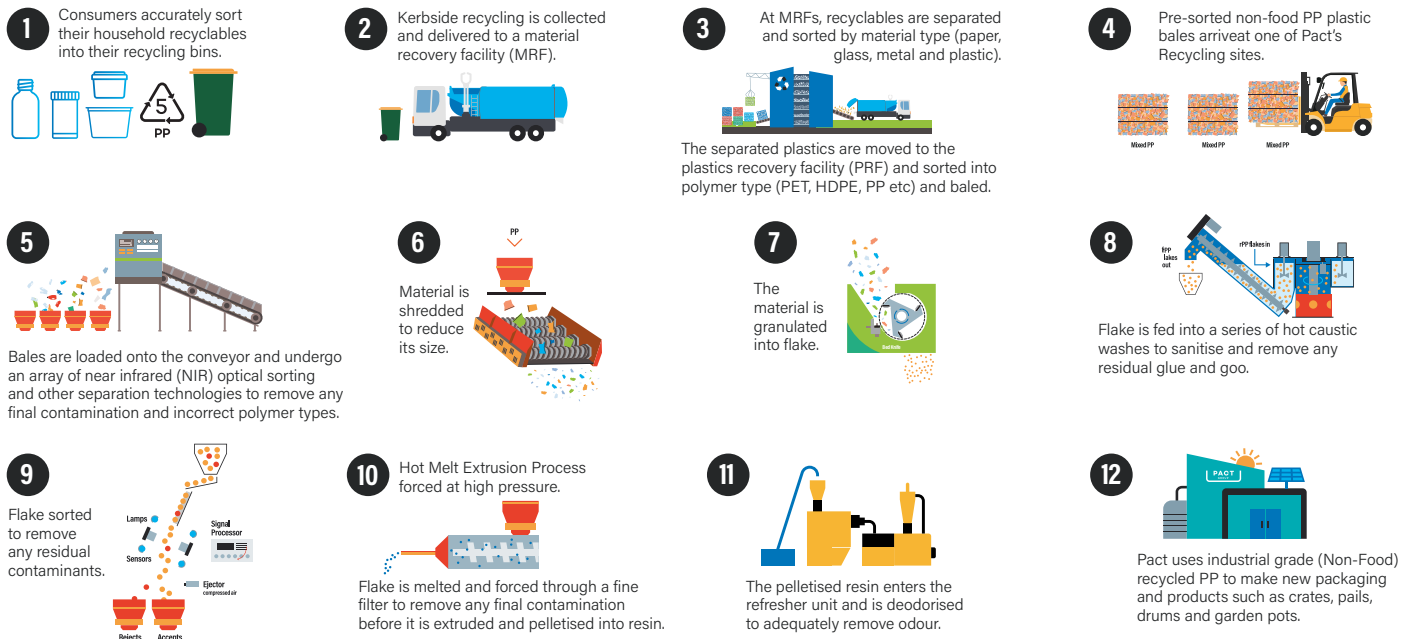
	rEdge-200		rPure-300	
Product Code and Name:	Polymer rHDPE rEdge-200	3215384	Polymer rHDPE rPure-300	3215381
Chemical description:	Recycled High Density Polyethylene (rHDPE)		Recycled High Density Polyethylene (rHDPE)	
Origin:	HDPE dairy and beverage bottles and containers (including their closures) sourced in Australia mainly from kerbside collections.		Produced using post-consumer mixed coloured HDPE bottles and containers (including their closures) collected in Australia from kerbside collections.	
Form:	Pellet, spheroid shaped.		Pellet.	
Colour:	Natural (translucent white)		Self-Coloured or "Jazz".	
Application:	Not for food contact applications.		Not for food contact applications.	
Major End Use:	Extrusion, Blow Moulding, Compounding and Sheet extrusion. This product is not recommended for applications where Environmental Stress Crack Resistance (ESCR) is required.		Extrusion, Blow moulding, Compounding and Sheet extrusion.	
Recycling Process:	Erema Refresher for low-odour deodorised pellet.		Erema Refresher for low-odour deodorised pellet.	

Circular Plastics Australia's Non Food-Grade rPP

Circular Plastics Australia (PE) has two specifications of Non Food-Grade rPP, coloured rClean-400 and black rClean-410. Both of these grades suit applications such as industrial pots, paint pails, horticultural trays, industrial bar chairs and other applications requiring injection grade properties of the recycled resin.

The Non Food-Grade PP Process:

THE NON-FOOD POLYPROPYLENE (PP) RECYCLING PROCESS



Product Data rClean-400: Recycled PP Resin (Non Food-Grade)



Product Data rClean-410: Recycled PP Resin (Non Food-Grade)

	rClean-400		rClean-410	
Product Code and Name:	Polymer rPP rClean-400	3215382	Polymer rPP rClean-410	3332150
Chemical description:	Polypropylene (PP)		Polypropylene (PP)	
Origin:	Produced using post-consumer mixed coloured PP rigid packaging collected in Australia from kerbside collections.		Produced using post-consumer mixed coloured PP rigid packaging collected in Australia from kerbside collections.	
Form:	Pellet.		Pellet.	
Colour:	Self-Coloured or "Jazz"		Black.	
Application:	Non-food contact.		Non-food contact.	
Major End Use:	Injection moulding and Compounding.		Injection moulding and Compounding.	
Recycling Process:	Erema Refresher for low-odour deodorised pellet.		Erema Refresher for low-odour deodorised pellet.	



Contact

Justin Knott
General Manager Sales & Marketing
E: justin.knott@pactgroup.com

Thorsten Voss
General Manager - Pact Recycling & Joint Ventures
E: thorsten.voss@pactgroup.com

